



European Commission  
Directorate-General  
Science, Research and Development

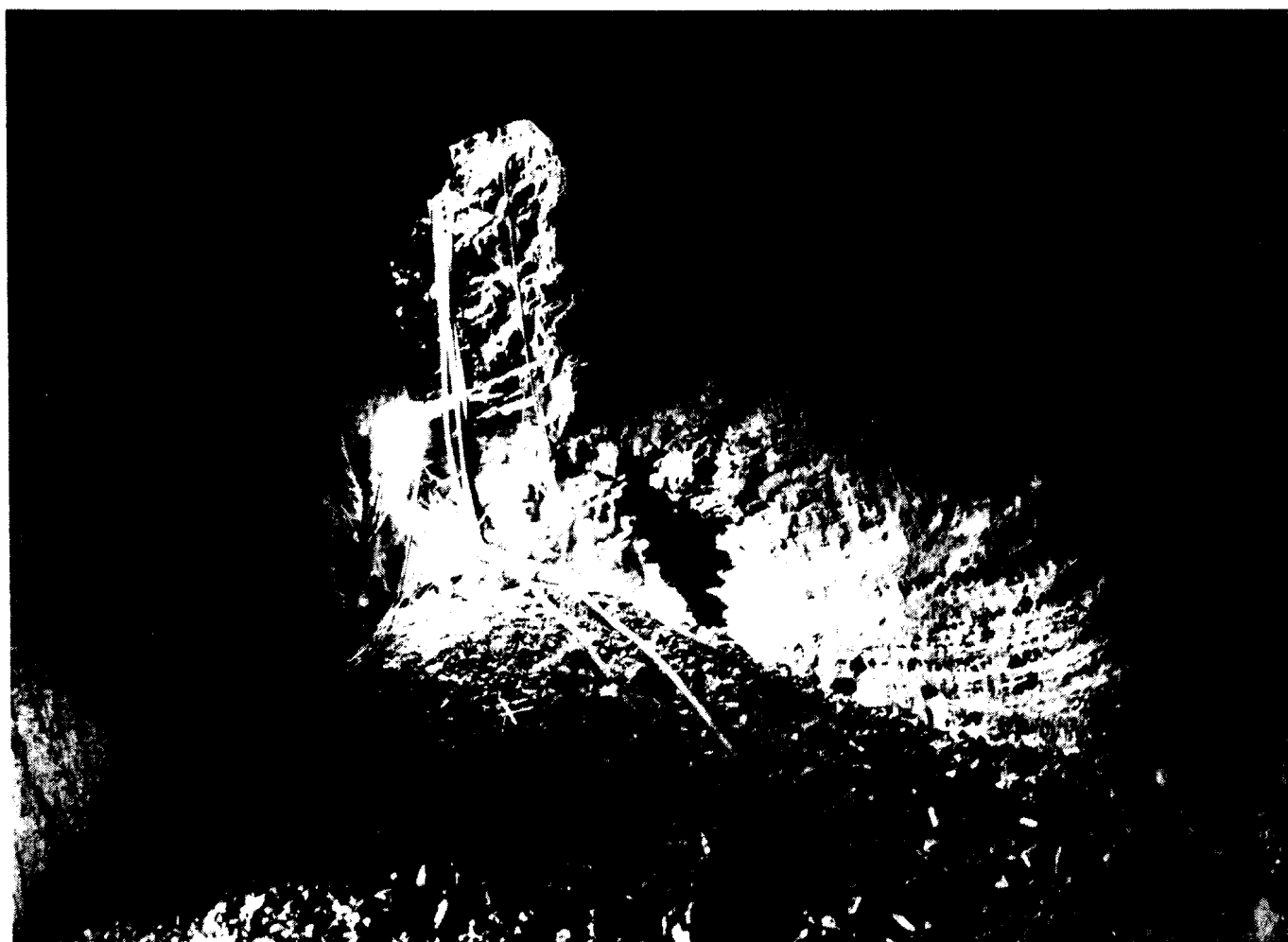


## **COST 65 ACTION**

Hydrogeological Aspects of Groundwater Protection  
in Karstic Areas

# **BASIC AND APPLIED HYDROGEOLOGICAL RESEARCH IN FRENCH KARSTIC AREAS**

Montpellier-Millau Workshop  
May, 5-8, 1994





European Commission  
Directorate-General  
Science, Research and Development



## **COST 65 ACTION**

Hydrogeological Aspects of Groundwater Protection  
in Karstic Areas

# **BASIC AND APPLIED HYDROGEOLOGICAL RESEARCH IN FRENCH KARSTIC AREAS**

Montpellier-Millau Workshop  
May, 5-8, 1994

Norbert CRAMPON & Michel BAKALOWICZ  
Editors

1994

## CONTENTS

Preface, by N.Crampon & M.Bakalowicz.....	1
<b>Section 1 : Introductory papers.....</b>	<b>5</b>
Karsts of France, by M.Bakalowicz.....	7
Structure and functioning of karst aquifers. Consequences on karst management and protection, by A.Mangin.....	11
<b>Section 2 : Contributions of French research teams to COST 65 Action.....</b>	<b>25</b>
Use of natural tracing to understand how an aquifer works. Intake area, recharges fluxes, transit, by J.Mudry, R.Lastennet, J.M.Puig & B.Blavoux.....	27
Karst hydrology in the central Jura mountains : climatic and structural influences, by P.Chauve, J.Mania, P.Broquet & F.Zwahlen.....	37
Climate parameters, snow melting process and groundwater recharge in Franche-Comté area (France), by J.Mania & P.Chauve.....	43
Convolution from tracer experiments in transient flow system. Theory and application to a karstic system (Causse de Gramat, France), by M.Dzikowski & N.Crampon.....	57
The piezometric effects of periodic pumping from a karstic spring. Consequences on the displacement of possible pollutants, by C.Drogue & A.M.Delaunay.....	75
Radon-222 measurements in a fractured karst aquifer, by M.Monnin, J.P.Morin, M.B.Pane & J.L.Seidel.....	81
High discharge pumping in a vertical cave. Fundamental and applied results, by M.Bakalowicz, P.Crochet, D.D'Hulst, A.Mangin, B.Marsaud, J.Ricard & R.Rouch.....	93
The karst environment of the urban district of Poitiers (Western France). Its features and water resources management and protection, by G.Porel, M.Razack, P.Moreau, A.Dupuy, P.Dudoignon, F.Girardeau & D.Clouteau.....	111
<b>Section 3 : Regional case histories.....</b>	<b>127</b>
A methodological approach of karstic aquifers. "Vulnerability mapping" in karstic areas from the experience of "source du Lez" karstic basin vulnerability map, by J.Avias.....	129
Karstic aquifers of the Grands Causses (France). Water reserves that must be protected. Northern Larzac and aquifer recharge in the Millau area, by M.Bakalowicz & J.Ricard....	137
<b>Section 4 : French research teams investigating on karst hydrogeology.....</b>	<b>149</b>
Avignon.....	151
Besançon.....	152
Chambéry.....	153
Lille.....	154
Montpellier (CNRS).....	156
Moulis (CNRS).....	157
Poitiers.....	158